



Extracorporeal Shock Wave Therapy

# ZEUS WAVE

Piezo+Pneumatic(Combine-type) Pain Treatment System



Well-being  
With  
Wever



**Wever Instruments Co., Ltd.**

Address Wever B/D, 22-9, Chungui-ro 37beon-gil, Uijeongbu-si Gyeonggi-do, Republic of Korea  
Tel +82-31-853-1924 Fax +82-31-853-1925 Website www.weverinstruments.com  
ZEUS WAVE(Piezo+Pneumatic-type) PR brochure ENG Rev.2



# ZEUS WAVE

## E.S.W.T ?

Extracorporeal shock wave therapy(ESWT) is one of the few proven medical techniques that can safely treat, in a non-surgical/non-invasive way, acute and chronic pain syndromes in the musculoskeletal system, on which traditional pain treatment had not shown a great effect.

## Appicatation Sites



Calcific Tendinitis



Tennis/Golfer's Elbow



Patellar Tendinitis



Plantar Fasciitis

## ZEUS WAVE Piezo+Pneumatic-type Specifications

Rated Power	AC 200~240V
Rated Frequency	50/60Hz
Power Consumption	1.1kVA
Energy Flux Density of Piezo-type(Max.)	0.702mJ/mm <sup>2</sup> ± 15%
Penetration Depth of Piezo-type(Max.)	40mm±20%
Focusing Size of Piezo-type(Max.)	1.78 x 1.78 x 15.81mm ± 20%
Intensity of Pneumatic-type(Max.)	7.0 bar ± 10%
Frequency of Pneumatic-type	0~10Hz ± 10%
Dimension	500(W) x 720(D) x 980(H)mm
Weight	About 70kg(about 35.2 pounds)



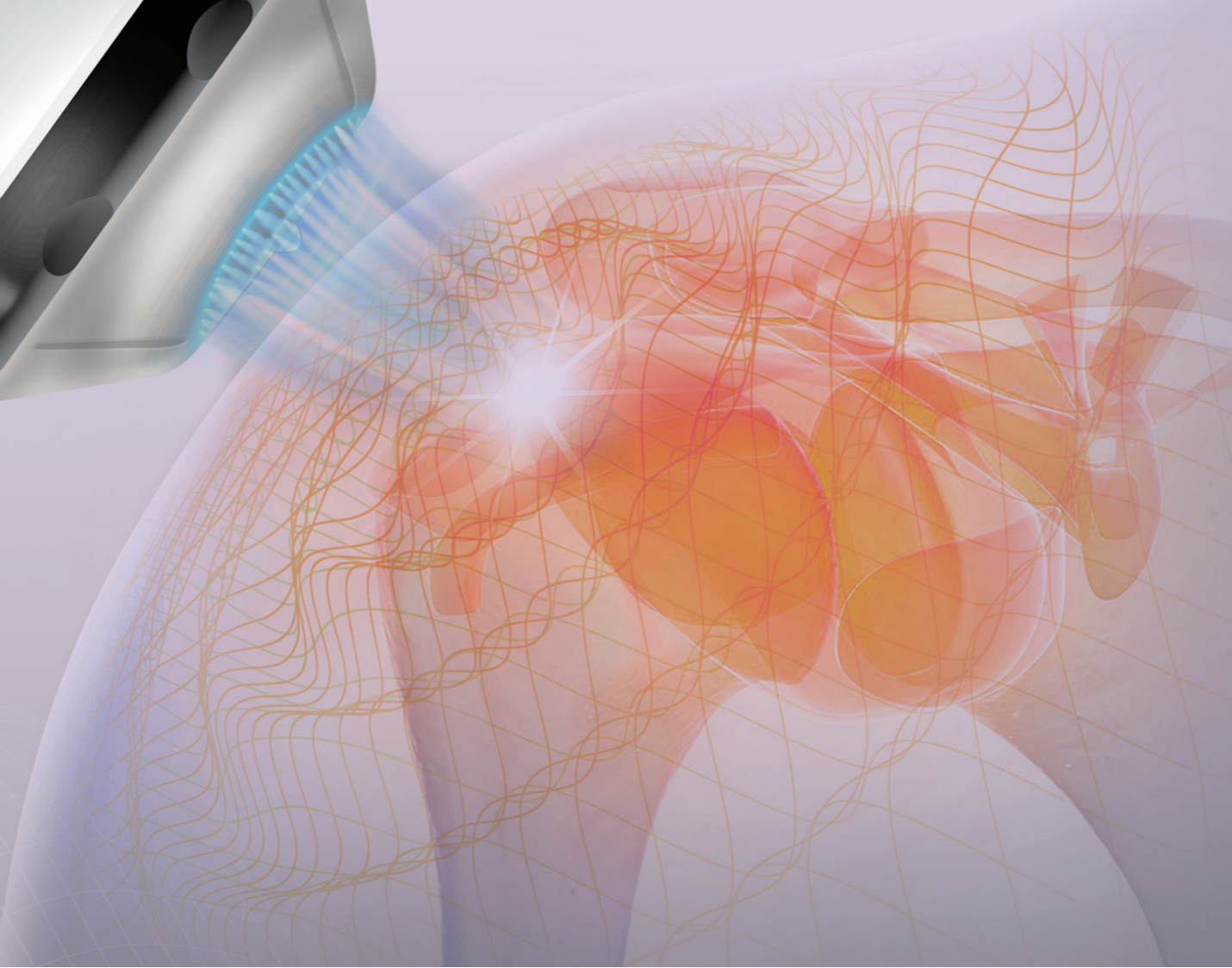
Non-surgical & Non-invasive Treatment



Two functions on One device



Application to Various Fields  
(Musculoskeletal Treatment, Sports Rehabilitation, Esthetic)

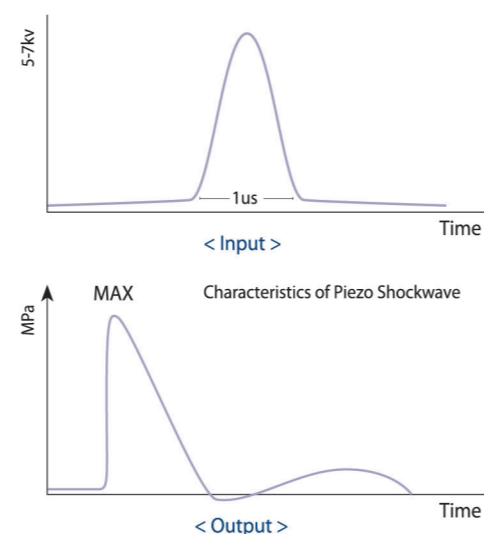




## ○ Piezo-type(Focusing Method) : Focusing Shock Wave Therapy

### What is Piezo?




The principle of the Piezo shock wave is that a focused shockwave is generated when a high-voltage(5K V-7KV)pulse is applied to a piezo element for a short period (1-2 μs). After the shockwave sharply rises, it drops exponentially and shows a short negative pressure



### Piezo-type FSWT Technology!

Piezo elements have a geometric structure in a concave shape to generate shock pulses for 1-2 μs when short high-voltage pulses are applied. Piezo elements are precisely designed so that the generated shock waves can be concentrated at specific points. This technology provides a precise and sophisticated focus area and provides painless treatment without making noise. The energy can be adjusted freely with little effect on the size of the focus area.

### Application of FSWT

			
When treating enthesopathies (Tendon, Bone)	When breaking up calcium deposits	When identifying the location of the pain spots with the pain triggers that cause synalgia	When treating superficial pain trigger points / Pain points and profundus pain trigger points

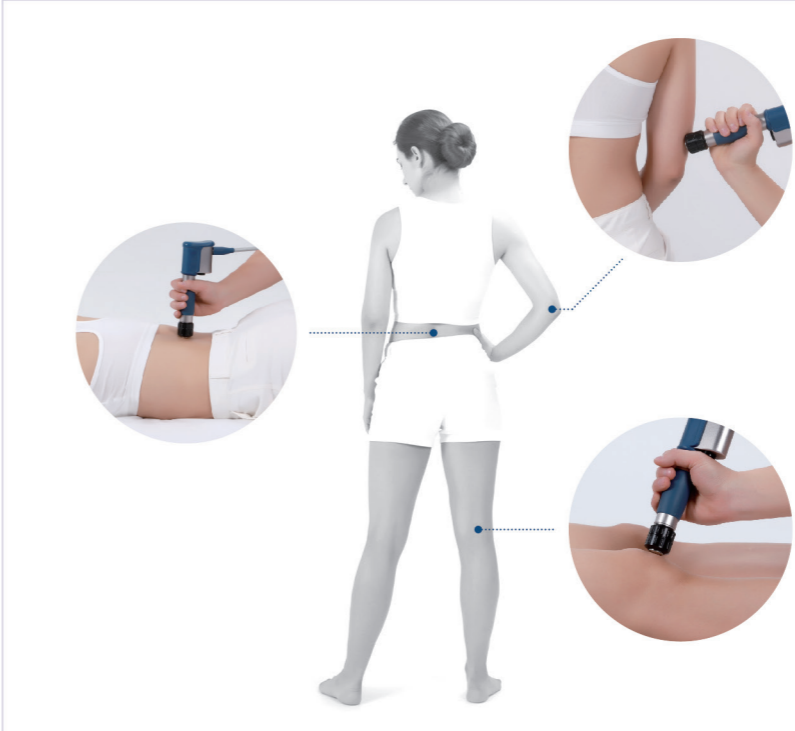
### Piezo Handpiece & Elastomer Gel Pads



			
5mm	10mm	15mm	20mm
			
25mm	30mm	35mm	40mm

## ○ Pneumatic-type(Radial Method) : Radial Shock Wave Therapy

### Features of RSWT



The radial shock wave can output pulses of high energy to facilitate the treatment of various tissues and structures with various pathological and medical conditions. Through the applicator, the transmitted kinetic energy generates radial shock waves from the area of contact with the skin to the desired treatment area.

**Application of RSWT**

- When smoothing muscle tissue
- When relaxing muscular tension(Tight Band)
- When locating and treating superficial pain trigger points
- When treating a wide area
- When activating connective tissues(Cell Epilepsy)

### Air-gun Handpiece & Applicators



**6 KINDS OF APPLICATORS**

		
5mm	10mm	15mm(A)
		
15mm(B)	20mm	35mm

### Composite Application of FSWT and RSWT

Combining a focusing shock wave and a radial shock wave integrates the advantages of both technologies. Focusing shock waves can be used to cure tendon inflammations in painfully indurated areas of the muscles(Pain Points) and other layers. Radial shock waves relax the muscle and connective tissues(Cell Epilepsy).

The combination of FSWT&RSWT can help to maximize therapeutic effects and promote recovery. The Zeus Wave uses a single-device that allows for both Piezo & Pneumatic.

